

# PerForm Edge JET16

Edge preparation & post-treatment  
for High performance cutting tools

**BUILD YOUR HIGH-PERFORMANCE CUTTING EDGE**

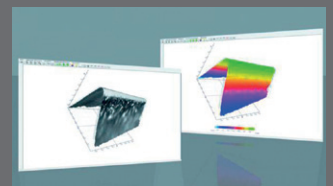
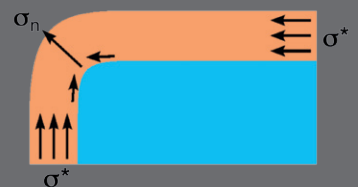
- A machine specially designed for cutting tools
- High productivity and low running cost
- Fully automatic



## Benefits of Edge Preparation

Benefits:

- Maximum precision and stability
- Efficient chip evacuation
- Superior surface finish
- Increased cutting speed & feed
- Longer tool life - reduced chipping



# Built Your High Performance Cutting Edge

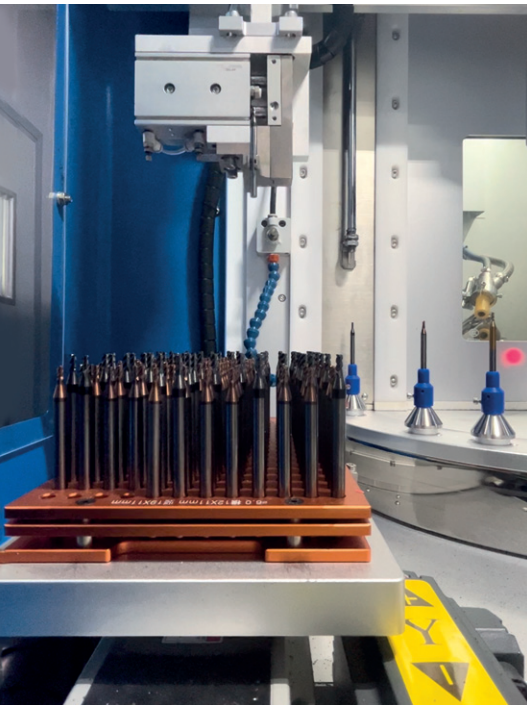
Minimum Operation - High productivity

## AUTOMATIC LOADING AND UNLOADING

### HIGH PRODUCTIVITY

The Jet 16 is equipped with a loading and unloading robot that minimizes operation time and production line.

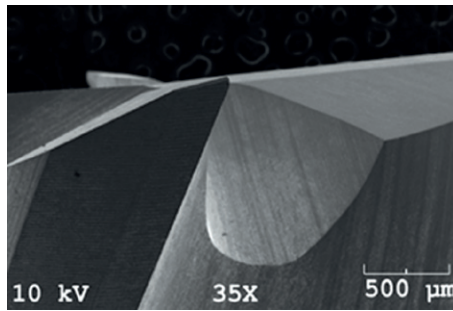
- Up to 720 tools per hour
- 16 loading stations to make turn around faster.



### OPTIMIZE YOUR PERFORMANCE

The parameter processes are easy to manage for different tool sizes and geometries. Based on the cutting operations and machining materials, you can optimize your edge radius. The specific abrasive media, composed of synthetic diamond powder and elastomer, allows you to obtain smooth and nice finishing surfaces.

- Stabilization of the cutting edge
- Increase in tool life
- Preparing the edge for coating deposition
- Minimizing chipping along the cutting edge
- Reduction of friction
- Improvement of wear mechanism, torque and force
- Improvement of the part quality (surface finish, etc.)



### Edge preparation for machining TiAlV6



### Deburring and polishing taps



### Polishing after coating



#### PRE TREATMENT

- Deburring
- Surface preparation
- Cutting edge radius
- Preparation

#### TOOL MATERIAL

- HSS
- Carbide
- CBN

#### TYPE OF TOOL

- Drill
- End mill
- Tap
- Insert
- Hob

#### POST TREATMENT

- Polishing



#### PD2i France

Pierre Collignon  
info@pd2i.com  
Tel +33 (0) 153 75 45 05

#### South East Asia

Leong Sai Yeong  
syleong@nanogrind.com  
Tel +60 12 482 2006

#### Mainland China and Taiwan

Olivia Kwok  
cfszLtd@gmail.com  
Tel +86 138 2353 0816

[www.PD2i.com](http://www.PD2i.com)